

Solo  
Waltz

Kevin Walz considers himself an artist who, back in 1976, accidentally became a designer. But 32 years, 22 collections, and 100-plus projects later, the *Interior Design* Hall of Fame member has clearly proved that fortuity is fate. His latest flawless furnishings, launched at the New York loft-showroom of **Ralph Pucci International**, provide additional evidence.

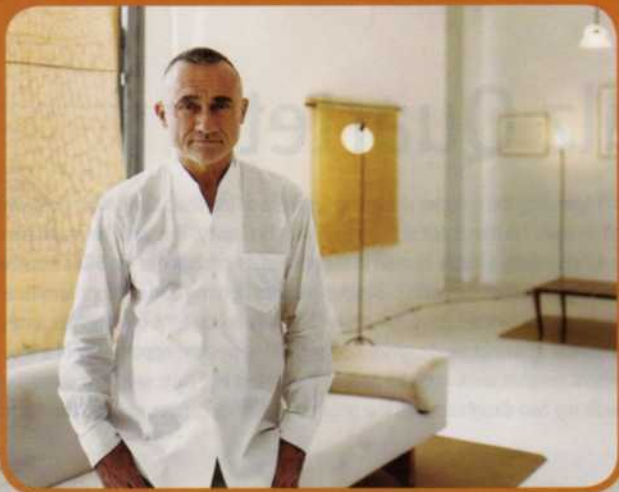
The 14 designs fall into three groups. For pieces in the Wood Block series, he bonded thin strips of solid walnut or ash with epoxy prior to hand-carving—which creates a slender fluidity that's especially winning in the sculpted lines of the pull-up chairs and the tapered legs of the sideboard. Upholstery enters the picture with his Inset sofa and daybed, both covered in silk and shearling. His Disc Lights are handmade by sculptor-metalworker James DeMartis from brass tubes that are darkened, waxed, and paired with acid-etched glass.

Pucci's presentation also included references to Walz's pre-designer days: paintings in shellac on linen as well as the *Insomnia* series of pencil drawings, conceived during a restless night. Our advice: Keep skipping the *Ambien*, Kevin. 212-633-0452; [ralphpucci.net](http://ralphpucci.net).

circle 404 ➤



CLOCKWISE FROM TOP LEFT: ANTOINE BOITZ; JERSEY WALZ; ANTOINE BOITZ; JERSEY WALZ



KEVIN WALZ  
 furniture lighting art



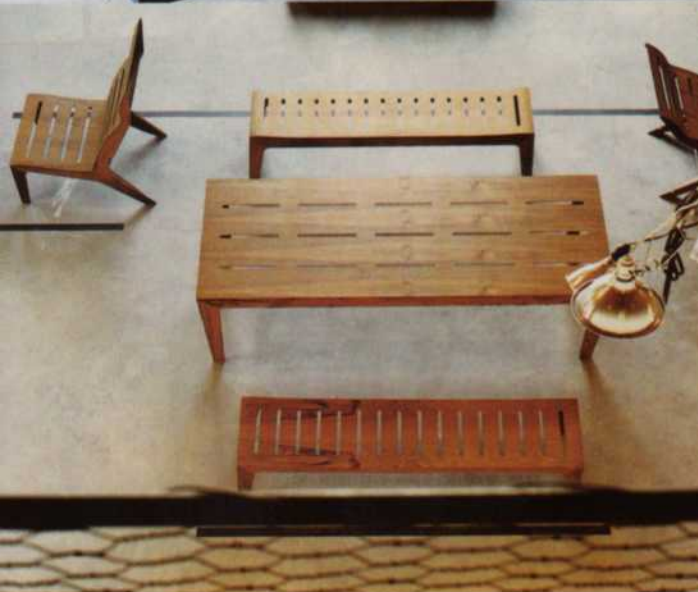
**Opposite, clockwise from top left:** The Floor Art Light in darkened, waxed brass shines on *Folded Surface 2* in shellac on linen. The *Inset* sofa, with its pivoting armrests, is upholstered in Edelman Leather shearling and Bergamo Fabrics silk velvet. A *Wood Block* sideboard in lacquered walnut stands in front of *Intimacy 1*, also in shellac on linen. A *Disc Lights* pendant fixture with an acid-etched glass shade shines on the lacquered walnut top of a *Wood Block* table.

**From top:** Kevin Walz visits Ralph Pucci International in New York. His *Wood Block* pull-up chairs come in either lacquered walnut or lacquered ash.

FROM TOP: JERSEY WALZ; ANTOINE BOOZ

# Walz Quartet

When he isn't spending the summer designing furniture or interiors, Kevin Walz does what any good father does: He hangs out at the beach with his family. This year, he multitasked with "4 Walz 4," essentially a family reunion in the guise of an exhibition at the **Silas Marder Gallery** in Bridgehampton, New York. Besides outdoor lighting and outdoor furniture, the latter handmade by brother Barry, the show featured photographs by daughter Jersey and sculptures and drawings by daughter Addison. "This was the opportunity of a lifetime—to present creative work with the people I'm closest to," Walz says. "To share this exhibition with my two daughters was the greatest joy for me." How well did their black-



and-white landscapes and lively installations meld with the precise elegance of his designs? "Stylistically, we're very different, but a clarity and resonance are shared."

He explains that his five made-to-order pieces of furniture in teak and carbon laminate were constructed "like canoes," with slotted surfaces and flexing backs; the lighting currently consists of a single fixture in cast bronze and thermoformed Corian. Everything moves upstream in August, from Bridgehampton to nearby Sag Harbor, to help inaugurate Silas Marder's temporary space on Main Street. 631-702-2306; silasmarder.com. **circle 405** ➤

